



**Leader Group (Industry) Co.,Ltd.**  
**Zhangjiagang Leader New Construction Material Co.,Ltd.**  
**Zhangjiagang Leader Import & Export Co.,Ltd.**

Add: B401 Guotai Xintiandi Plaza, No. 19 Renmin East Road,  
Zhangjiagang City, Jiangsu, China (P.C. 215600)

Tel: 86-512-56728110

Fax: 86-512-56728511

Mobile: 86-13812982102

E-mail: [sales@zjgleader.com](mailto:sales@zjgleader.com)

More information please visit:

[www.zjgleader.com](http://www.zjgleader.com)

[www.fireproof-board.com](http://www.fireproof-board.com)

[www.zjgmgo.com](http://www.zjgmgo.com)

**ZJGLEADER**  
PRODUCTS CATALOGUE



**ZJGLEADER GROUP (INDUSTRY) CO.,LTD**

”  
**ENVIRONMENT  
FRIENDLY  
DECORATIVE  
MATERIALS**

Everyone's duty to love and  
protect the environment

# CONTENTS

- 01** Company Introduction
- 05** MGO Board / Fireproof Boards
- 05** Application of Partition Wall
- 07** Sanded Mgo Board
- 09** EPS/XPS Sandwich Panel
- 10** Acoustic Perforated Ceiling
- 11** PVC Coated Mgo Ceiling
- 13** Exterior Fiber Cement Siding
- 39** Fiber Cement Board
- 41** Wood Grain Cement Board





# COMPANY INTRODUCTION

**LEADER GROUP(industry) Co.,Ltd.** is Located in Zhangjiagang City, in the famous Yangtze River Delta Economic Zone. Two are three subsidiaries attached to LEADER GROUP which are Zhangjiagang Leader New Construction Material Co.,Ltd.,Zhangjiagang Leader Import & Export Co.,Ltd.

**Zhangjiagang Leader New Construction Material Co.,Ltd.** was established 2003, we produce building materials, such as Mgo Boards, Fiber Cement Boards, Fiber Cement Exterior Siding, PVC ceiling boards,calcium silicate boards, T-bars and some accessories, Which can be used in interior and exterior wall.



# WHY CHOOSE US

Our sales company was established in 2005, more than 90% product export through this company. Our product has been export to Southeast Asia, Middle East, the USA, European Union, and other countries and regions.



### Found in 2003

Zhangjiagang Leader new construction material co.,ltd was established 2003.



### 1000 square meters

Zhangjiagang Leader new construction material co.,ltd with a land area of 1000 square meters.



### Annual export 5 million

Zhangjiagang Leader import & export co.,ltd was established in 2005, more than 90% product export through this company.



### 4500 pieces per day

Zhangjiagang Leader new construction material co.,ltd churns out 4500 pieces every day.



### 158 employees

Today that group has 158 employees, and it is growing



### 6 production lines

Zhangjiagang Leader new construction material co.,ltd is equipped with three production lines.



ZJGLEADER

# CORPORATION CULTURE

## ▶ Management system of quality

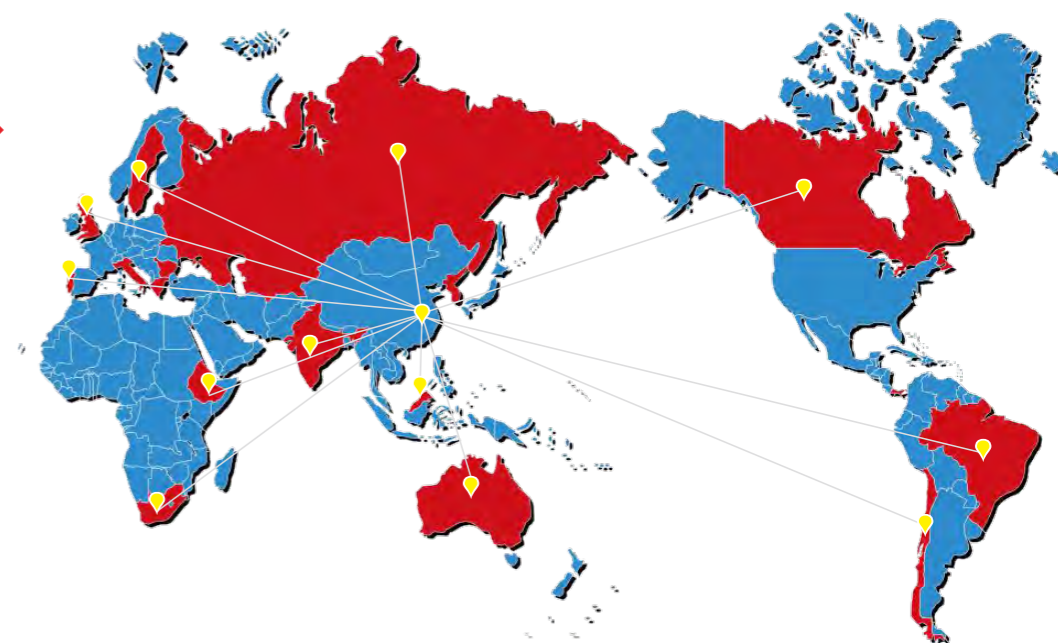
According to ISO9001:2000 international standards, ZJGLEADER has established the system of perfect quality control, from materials procurement to after sales service, each link has strict quality control and request, it is sure to offer first class product quality and satisfactory service to each consumer.

## ▶ Products & Character

Product shows a kind of industrial spirit in great extent. First of all, it is preciseness, integrity and quality. In the back, there are humanism and scientific spirit as great support, this kind of spirit is worthy to learning from for us.



# SALES NETWORK



# Certificate

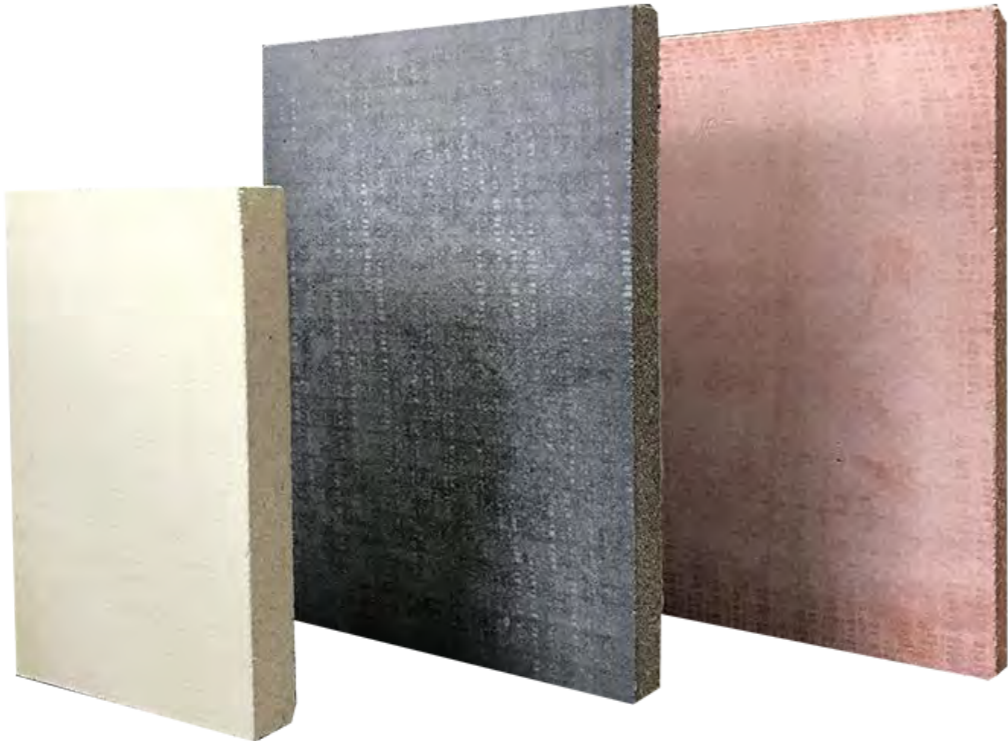


# Environment Protective Policy

1. The choice in using and protecting on the energy and raw material resources, guarantees that we have not wasted.
2. Never using raw materials, which endanger to the human body, such as the asbestos.
3. Utilize the research and technology to offer the protection of workplace and community's environment, and prevent the pollution from the each, water and air.
4. ZJGLEADER factory follows the regulations of local environmental protection, makes preparation for emergency, regarding environmental protection and public security as the major premise, takes action in time in case unexpected emergence.
5. Make environmentally safe product that customer hope unanimously; guarantee that offers the valuable and healthy building materials to society.
6. Prevent pollution, reduce the waste of all resources. Use the circulated materials in process of production, and pay attention in a proper way; such as developing special product to deal with garrulous materials so as not to influence the environment.

# MGO BOARD

Magnesium Oxide Board / Fireproof Board



## Main characteristics

- 1 Outstanding fireproof performance
- 2 Keep warm, insulate against heat, the sound insulation is of good performance
- 3 Scientific prescription, really green environmental protection panel. 100% does not include the asbestos
- 4 Good performance of Damp-proof
- 5 Toughness can do the proper modeling
- 6 Antiseptic, protection against insects, defending ants
- 7 Construction simple, easy and swift, easy to decorate, easy to cut, bore, shear
- 8 Applicable to other modeling to decorate for twice.

## Main Materials

MGO board uses proprietary with Mgo, MgCl<sub>2</sub>, Perlite, Fiberglass, Chip compounds to deliver a multi-purpose, versatile, non-combustible, and unique board material. This intergral, hard, inert and paperless construction panel has superior characteristics over panels made from gypsum, clay or wood and paper particles. So for an easier, better and faster job, MGO board is best for interior and exterior construction.



## Data Information

Heading	Unit Used	Inspection value	Standard
Density	g/cm <sup>3</sup>	0.96/1.12g/cm <sup>3</sup>	GB 8624
Fire Ratings	grade	A1	GB/T7019-1997
Thermal Resistance	m <sup>2</sup> K/W	1.14M <sup>2</sup> K/W	GB/T13475-92
Bending Resistance(Dry)	≤ Mpa	18Mpa	GB/T7019-1997
Being Resistance(Fully Absorbed Water)	≤ Mpa	22Mpa	GB/T7019-1997
Sound Insulation	dB	≥44dB	GBJ121-88
Absorption Moisture	≤ %	≤ 15%	GB/T7019-1997
Tensile Strength	≤ Mpa	8-13 Mpa	GB/T7019-1997
Impact Resistance	kJ/m <sup>2</sup>	Between 2.0-2.5 are qualified, for 4mm,our board could reach 4.5kJ/m <sup>2</sup> . So our boards are good.	CNS13778
Thickness	mm	3mm-20mm	
Specification	mm	1220*2440,1200*2700,1200*3000	
Color		white, grey, green and red	

# MGO Board

Sanded MGO Board / Red MGO Board

## What is the difference between the standard MgO board and sanded MgO board

- The basic material of the MgO board is powder; While MgO powder is less in the sanded MgO board , the other materials like the saw dust and perlite are more.
- Sanding MgO board sanded by the sanding machine, the backside more smooth
- For the sanding one besides could used for the walls doors, floors also can be used for deep processing, like laminated with the melamine paper

### ◆ Standard MgO board and Sanded MgO Board difference surface



Standard MgO board surface with bubbles



Sanded MgO Board surface slurry Smooth surface

### ◆ Standard MgO board and Sanded MgO Board difference backside



Standard MgO board



Sanded MgO board Using 100 purpose sanding paper sanding

# Application



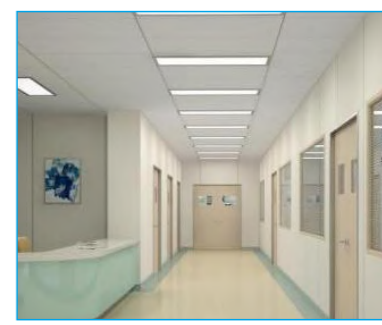
**Commercial building**  
Commercial mansion, public place of entertainment, market and hotel



**Industrial building**  
Factory,warehouse



**Residential housing**  
New-type house, fitting up renovating



**Public place**  
Hospital, theater and station

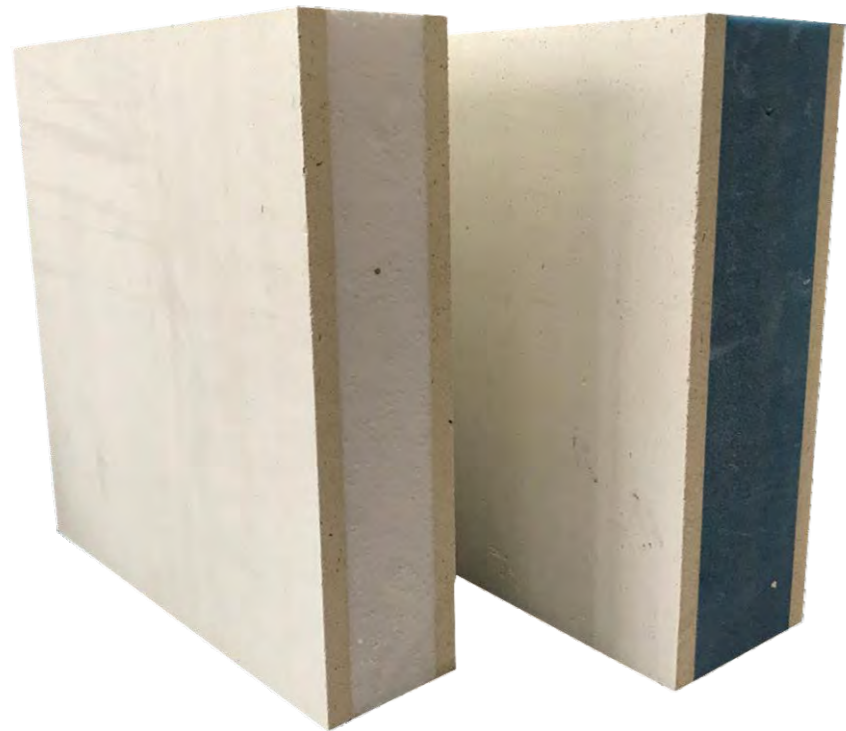
The applications of mgo baord is depend on different colors and thicknesses.

- ◆ 4-15mm of gray mgo board can perfectly replace the fiber cement board.
- ◆ 3-15mm of white mgo board can be used in the partition wall.
- ◆ 15-20mm of gray and red mgo board are usually used in the flooring installation.



# EPS/XPS SANDWICH PANEL

Green / Environment Protection / Fireproof



## Date Information:

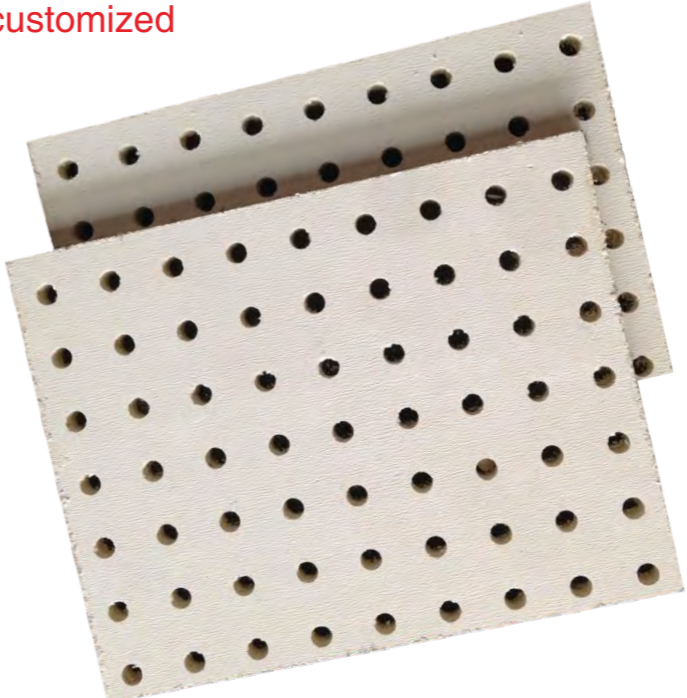
Surface material: MGO Board  
 Basic material: EPS or XPS  
 Thickness: 20mm, 40mm, 50mm, 75mm, 100mm, 150mm, 200mm  
 Max width: 1200mm  
 Length: can customize dimensions as request by customers  
 Application: For trailers, for air shaft in buildings, partition wall etc.

## Main Features:

- ◆ Keep warm
- ◆ Good performance of sound insulation
- ◆ Fireproof: Both MGO board and Flame retardant-grade EPS/XPS are fire-resistance materials.
- ◆ Green and environment protection, there are two kinds of way to compound, one is done by Automatic product line, the other is compound by glue. The first way could be sure that no formaldehyde or benzene 100%, the second way, we will adopt the glue according with technological standard of country, and to be sure it is environment protection.
- ◆ Easy to construct, combine discretionarily, the sizes and thickness could be made according to your requirement, and install in locale one time to save the cost of installation. And we also could supply the special type to confirm the installation be easier.

# ACOUSTIC PERFORATED CEILING

Pvc pattern can be customized

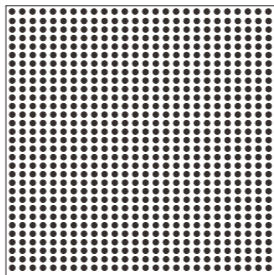


## Products Date:

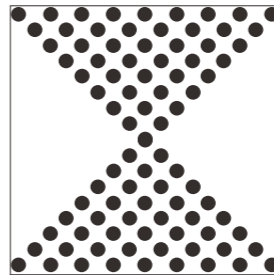
- Material Base: MGO Board
- Surface material: Emulsion paint of acrylic acid
- Back material: laminated PVC
- Bending strength: 15Mpa(GB/T7019-1997)
- Density: 0.8-1.1g/cm<sup>3</sup>(GB/T7019-1997)
- Absorbing water rate 15%(JC688-1998)
- Fireproof characteristic: A Grade
- Thermal resistance: 1.14m<sup>2</sup>K/W(GB/T13475-92)

## Specifications

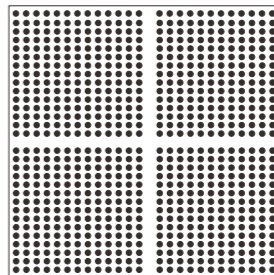
Thickness: 5mm 6mm 8mm 9mm  
 Sizes: 603\*603mm 595\*595mm 600\*1200mm  
 Perforation Patterns: Round, Square and Micro  
 Hole Diameter (Round): 6mm; 8mm; 12mm; 15mm  
 (Square): 5mm\*5mm; 10mm\*10mm  
 (Micro): 3mm\*3mm



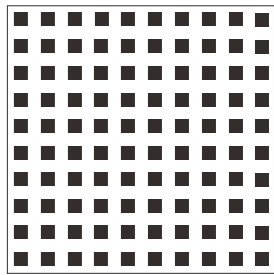
YD-158



YD-168



YD-189



YD-198

- ◆ More patterns can be customized

# PVC COATED MGO CEILING

Pvc pattern can be customized



YD-032



YD-016



YD-018



YD-036



YD-052



YD-066



YD-061



YD-068



YD-021



YD-042



YD-053



YD-062

## Main Characteristic:

- Resist Sink
- Fire Prevention
- No Dust
- Damp-proof
- Durable In Use
- 100% No Asbestos

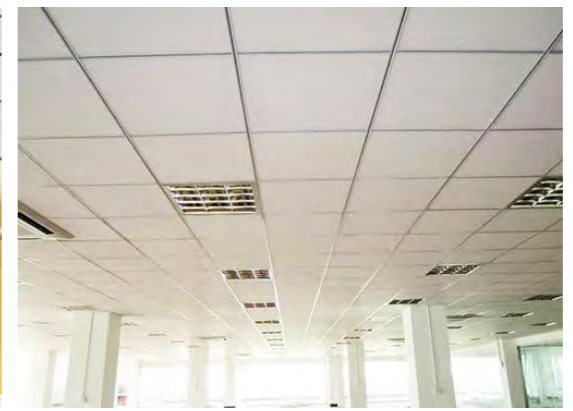
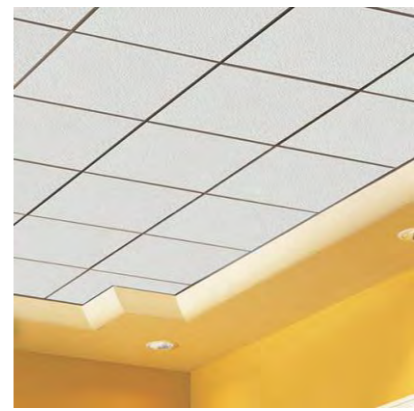
Thickness:5mm 6mm 8mm 9mm  
 Sizes:603\*603mm 595\*595mm 600\*1200mm

## Products Date:

- Material Base: MGO Board
- Surface material: laminates PVC
- Back material: Superior aluminum foil
- Bending strength:15Mpa(GB/T7019-1997)
- Density: 0.8-1.1g/cm<sup>3</sup>(GB/T7019-1997)
- Absorbing water rate 15%(JC688-1998)
- Fireproof characteristic: A Grade
- Thermal resistance: 1.14m<sup>2</sup>K/W(GB/T13475-92)
- The corner is dealt with: Bright shelf platform/drops
- Safe: 100% does not include such harmful substances as the asbestos and etc.

## Using Place:

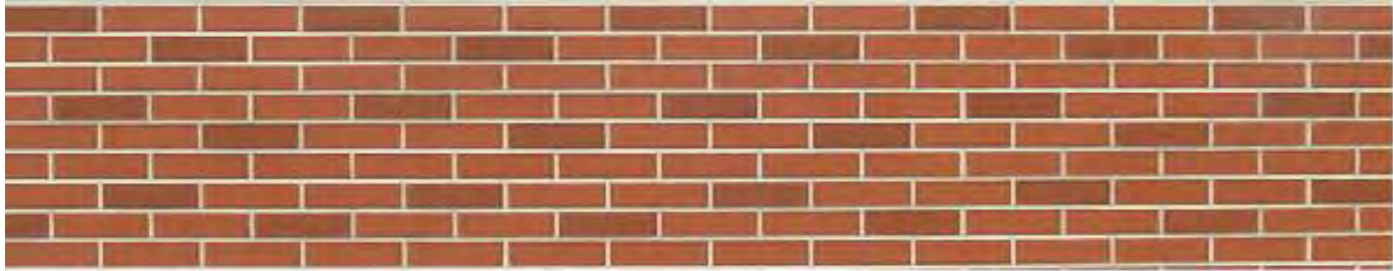
The office, the meeting room, the mall, the hotel, the restaurant, the library, the computer laboratory, the hospital, the industrial factory building, classroom and other high humidity and clean place.





# FIBER CEMENT SIDING

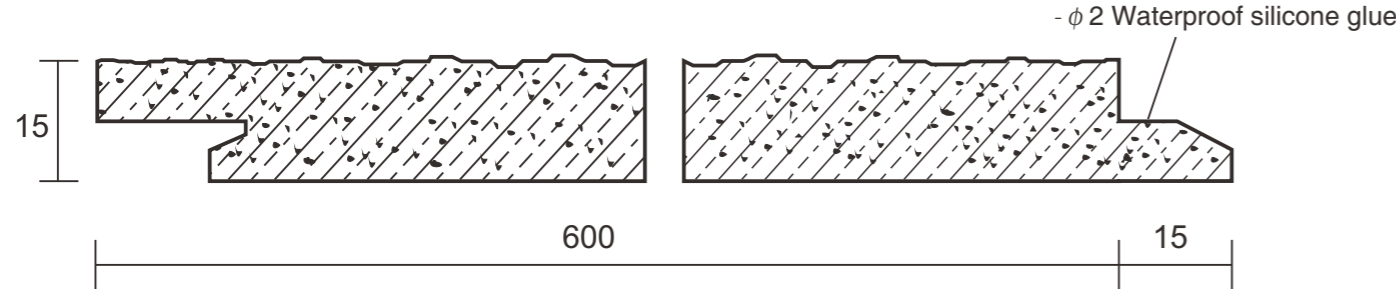
Fiber Cement Exterior Wall Cladding



## Product Specification:

Length: 3000mm  
Width: 615mm (including 15mm groove)  
Thickness: 14-16mm

FIBER CEMENT CLADDING SECTION



## Product Features:

- Our products 100% non asbestos, no formaldehyde and other harmful substances. Which is made of white, multicolor high strength silicate, natural fiber and mineral powder, environment protection;
- Fireproof, waterproof, mothproof, high strength & durability, sound insulation and absorption, our products are applicable to all kinds of environment;
- High Cost effective, easy processing, dry construction, fast installation;
- The diversity of colors and patterns, we can produce according to the ethnic architecture style in the world and also can customize designs;
- Impact resistance, frost resistance, sound insulation, barrier strong noise, weather resistance, good durability, service life of 50-70 years.

## Application:

Our products are widely used in villas, low or high-rise building, barrier fence of high-speed road, city construction, external insulation, tunnel, subway station, landscape wall, restaurants, partition wall, public building decoration, etc.



# FIBER CEMENT SIDING

Fiber Cement Exterior Wall Cladding



## Application:

ITEM	TESTING RESULT	STANDARD
Density, g/cm <sup>3</sup>	1.24-1.5	JC/T 412.1-2006
Bending Strength, Mpa	Air-Dry	12.2
	Water-saturated	8.0
Anti-Folding Elastic, Modulus, Mpa	6550	GB/T 17657-1999
Anti-Impact Strength, KJ/m <sup>2</sup>	3.6	GB/T 7019-1999
Resistance-Weather(2000h)	No obvious discoloration on the surface	GB/T 16259-1996
Anti-Freezing(25 times)	No Layer, No Crack	GB/T 7019-1977
Water Permeability	No wet mark, no water-drop on the back of the cladding after 24h	GB/T 7019-1977
Back Bolt Anti-Pulling	6	GB/T 145-2013
Thermal Conductivity, W/(m.k)	0.19	GB/T 10294-2008
Water Absorption Rate	12.4	GB/T 7019-1997
Asbestos Content	No Asbestos	HJ/T 223-2005
Coating Alkali Resistance	No Change	GB/T 17749-1999
Coating Stain Resistance(5 cycle)	No Change	GB/T 17749-1999
Coating washability	10000 No Change	GB/T 17749-1999
Anti wind pressure	8 Grade	GB/T 15227-2007
Fire resistance	A1 Grade	GB8624-2012

## Product installation:



1. Fixing starter track



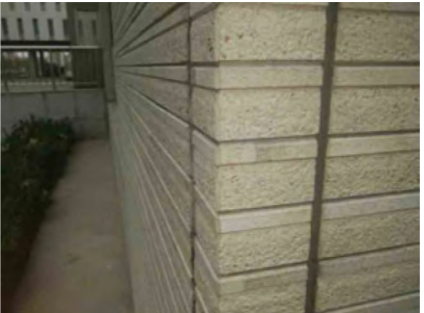
2. Fixing wood or steel joist



3. Fixing steel clip



4. Fixing fiber cement siding



5. Fixing fiber cement corner



6. Fixing joiner



7. Fixing silicone sealant



Fixing cladding with screws



Repairing screw tips

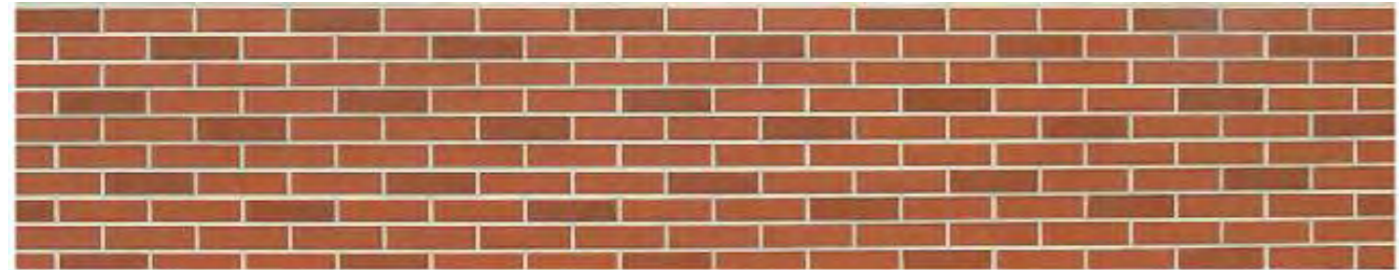
## Packing



# COLOR COATING SERIES

(3000×615×14-16mm)

## CERAMIC BRICK PATTERN



YD-CBP01



YD-CBP02



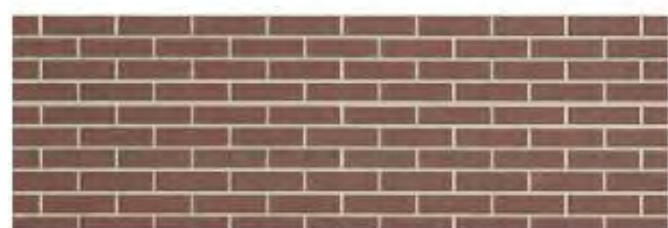
YD-CBP03



YD-CBP04



YD-CBP05



YD-CBP06



YD-CBP07



YD-CBP08



YD-CBP09

## BROKEN BRICK PATTERN



YD-BBP01



YD-BBP02



YD-BBP03



YD-BBP04



YD-BBP05



YD-BBP06



YD-BBP07



YD-BBP08



YD-BBP09



YD-BBP10

## ➤ MINI BRICK PATTERN



YDMBP01



YDMBP02



YDMBP03



YDMBP04

## ➤ STRIPE BRICK PATTERN



YD-SBP01



YD-SBP02

## ➤ WATER WAVE PATTERN



YD-WWP01



YD-WWP02

## FACE BRICK PATTERN



YDFBP-10011024



YDFBPD19



YDFBPD20



YDFBPD22



YDFBPD27



YDFBPD28



YDFBP-673



YDFBP-675

## BROKEN STONE PATTERN



YD-BSP01



YD-BSP02



YD-BSP03



YD-BSP04



YD-BSP05



YD-BSP06



YD-BSP07



YD-BSP08



YD-BSP09



YD-BSP10

## STRIPE PATTERN



YDSP20



YDSP-1002



YDSP15



YDSP16



YDSP16

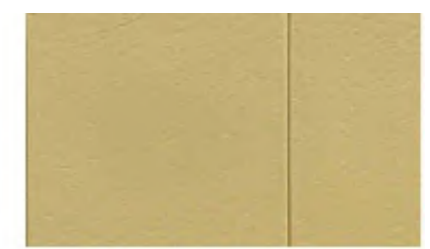
## SAND ROCK PATTERN



YDSRP10



YDSRP09



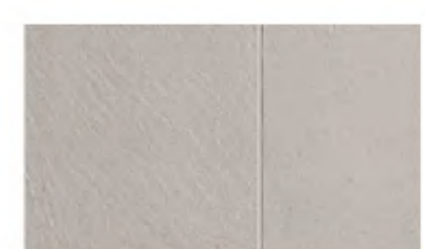
YDSRP12



YDSRP111



YDSRP08



YDSRP04

## CULTURE STONE PATTERN



YDCSP18



YDCSP19



YDCSP22

## ➤ IMPRESSION PATTERN



YDIP10



YDIP12

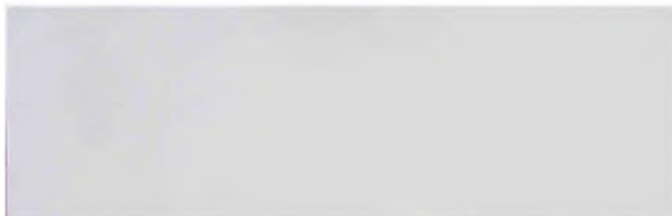


YDIP04

## ➤ PLANR DECORATION PATTERN



YDPDP01



YDPDP02



YDPDP03

## NC PRECISION COATING WEATHERING SERIES

(3000×615×14-16mm)

## ➤ MULTICOLOR FACE BRICK PATTERN



YD-SK-MFB01



YD-SK-MFB02



YD-SK-MFB03



YD-SK-MFB04



YD-SK-MFB05

### MULTICOLOR TIMBER GRAIN PATTERN



YD-SK265-01



YD-SK265-02

### MULTICOLOR PLANE DECORATION PATTERN



YD-SK005-01



YD-SK005-02

### MULTICOLOR SAND ROCK PATTERN



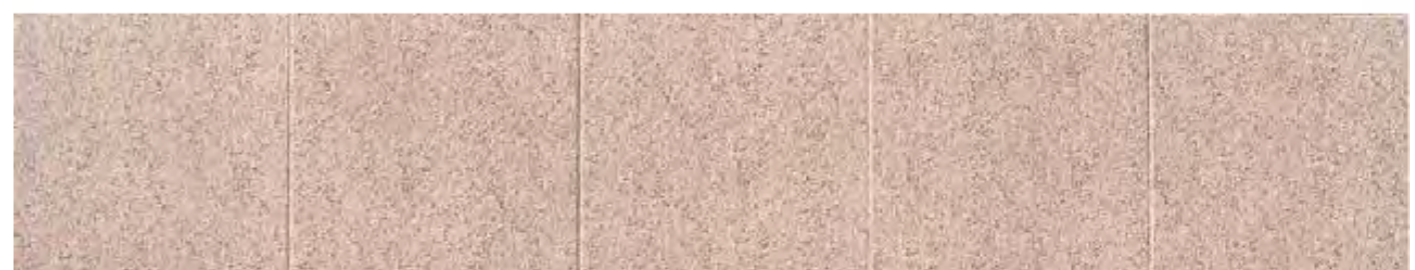
YD-SK006-01



YD-SK006-02



YD-SK006-03



YD-SK006-04



## MULTICOLOR BROKEN BRICK PATTERN



YD-SK312-01



YD-SK312-02



YD-SK312-03



YD-SK312-04



YD-SK312-05

## MULTICOLOR MINI BRICK PATTERN



YD-SK601-01



YD-SK601-02

## MULTICOLOR CULTURE STONE PATTERN



YD-SK828-01



YD-SK828-02



YD-SK828-03



YD-SK828-04

# COLOR CEMENT SERIES

(3000×615×14-16mm)

## MULTICOLOR CERAMIC BRICK PATTERN



YD-SK131



YD-SK132



YD-SK134



YD-SK135



YD-SK136



YD-SK137

## STRIPE BRICK STYLE



YD-CTZ-R001



YD-CTZ-Y001



YD-CTZ-G001



YD-CTZ-O001

## TIMBER GRAIN STYLE



YD-CMX-R001



YD-CMX-Y001



YD-CMX-GB001



YD-CMX-O001

### ▶ PLANE DECORATION STYLE



YD-CPL-GB001



YD-CPL-R001



YD-CPS-GB001

### ▶ WATER WAVE STYLE



YD-CWX-R001



YD-CWX-Y001



YD-CWX-GB001



YD-CWX-O001

### ▶ STRIPE STYLE



YD-CEX007-Y001

### ▶ BROKEN BRICK STYLE



YD-CZX312-Y001

### ▶ MINI BRICK STYLE



YD-CZX601-R001



YD-CZX601-Y001



YD-CZX601-GB001

# CLEAR WATER SERIES

(3000×615×14-16mm)



STRIPE BRICK PATTERN



WORMHOLE STRIPE PATTERN



TIMBER GRAIN PATTERN







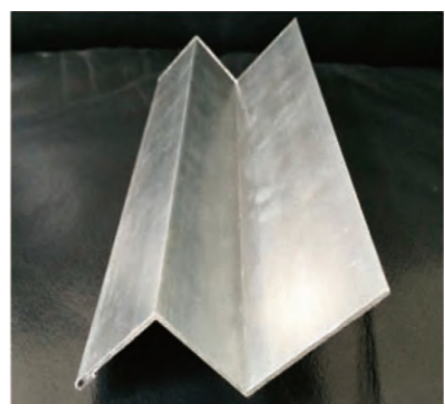


STRIPE PATTERN



BROKEN BRICK PATTERN

# INSTALLATION ACCESSORIES

Name	Specifications	Shap	Installation Position
Fiber Cement Corner	615*100*100mm		
Steel Clip	95*52mm		
Joiner	3M		
Silicone Sealant	300ml or 600ml		
Starter Track	3M		

# FIBER CEMENT BOARD

High Strength / 100% No Asbestos



## Specifications

Thickness: 4-20mm / Max Width: 1220mm  
Max Length: 3660mm / Edge: Square / Beveled / Tapered

## Technical Ratio

Density: 1.2-1.35g/cm<sup>3</sup>  
Moisture Content: ≤10%  
Water Absorbing Capacity: ≤55%  
Thermal Conductivity: Average ≤0.20W/MK  
Bending Strength:  
Transverse ≥11.0N/mm<sup>2</sup> Vertical ≥8.5N/mm<sup>2</sup>  
Non-combustible:  
PSB Gb8624 Grade A (100% no asbestos)

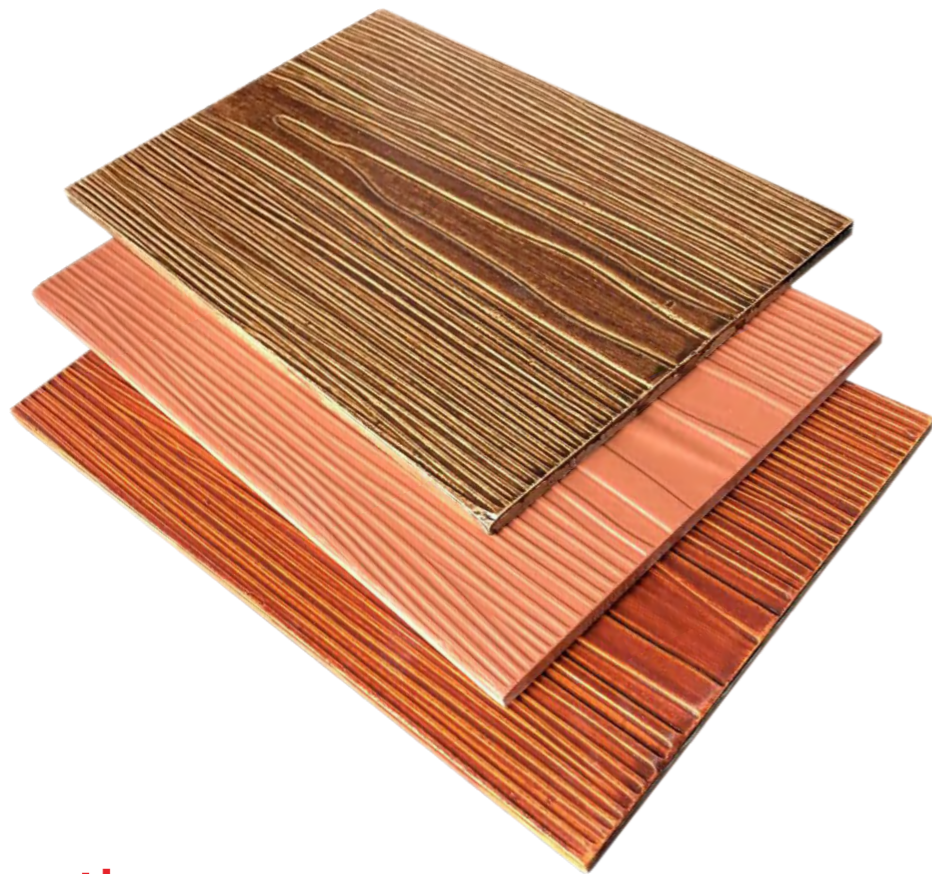
## Main Features

100% asbestos free  
Non-combustible: PSB Gb8624 Grade A  
Moisture resistant  
Excellent impact resistance  
Excellent sound insulation  
High dimensional stability  
Good surface finish  
Easy to work, fix and decorate

## Application



# WOOD GRAIN CEMENT BOARD



## Specifications

100% no asbestos  
Size: 200\*2400\*8mm;200\*3000\*8mm



## Pattern



FCM-Y001



FCM-Y020



FCM-D010



FCM-D003



FCM-B001



FCM-S003



FCM-Y001-1



FCM-D013



FCM-Y015



FCM-S001



FCM-Y006



FCM-S006

More pattern are available, please contact with sales department.